



# Digital Access Solutions

For Wireless Sliding Door Applications

**ASSA ABLOY**  
Opening Solutions

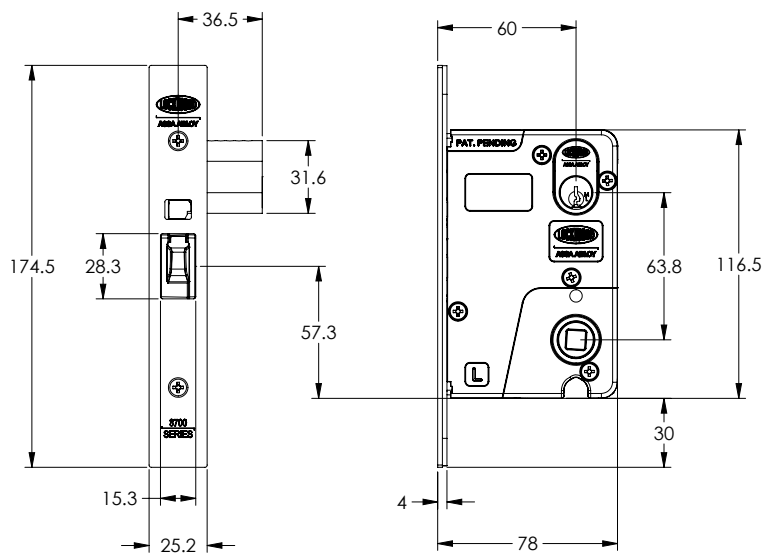
The global leader  
in access solutions



## Overview

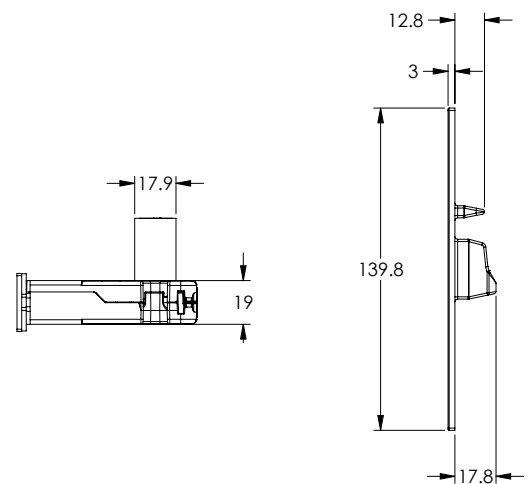
The Selector Series 3773E self-latching sliding door mortice lock is designed for property managers, building owners, and security professionals who require a reliable and secure locking solution for sliding doors when integrated with wireless access control systems like Aperio, SMARTair and Integral escutcheons. This lock is particularly beneficial for commercial buildings, high-end residential properties, and public facilities such as schools and hospitals.

The 3773E provides robust security and is also ideal for environments where accessibility and ease of use are paramount. The lock's unique latch hold back function allows for one-handed operation during key override. Its compliance with AS1428.1 standards ensures that it is suitable for use in facilities that require accessible design, promoting inclusivity and ease of access for people with disabilities. This combination of security, convenience, and accessibility makes the 3773E an essential choice for those looking to enhance the functionality and safety of their sliding doors.



Mortice lock:  
Front View

Mortice Lock :  
Side View



Mortice Lock:  
Top View

Strike:  
Side View



## Introduction

The 3773E Self-Latching sliding door Mortice Lock, a pinnacle of security technology designed to seamlessly integrate with a wide range of electronic wireless escutcheons from ASSA ABLOY. This state-of-the-art lock is engineered for reliability and ease of use, providing a robust locking mechanism. The 3773E model is self-latching and suitable for use with an Australian oval cylinder for key override functionality.

## Application

The 3773E Sliding Door mortice lock is used in applications where Aperio, SMARTair, or Integral wireless escutcheons are required for sliding door solutions.

## Convenience and Security

The 3773E mortice lock is a self-latching mortice lock that automatically engages when the door is closed.

## Simplified Installation

Wireless escutcheons with self-latching mortice locks simplify installation.

They require only minor modifications to existing mechanical mortice preparations, with no additional wiring needed.

This ease of installation saves time and effort during setup.

Suitable for both timber & Aluminum fixings.

## Disability

When used with ASSA ABLOY's range of wireless locks & paired sliding door handles, the 3773E provides an AS1428.1 compliant solution where disabled access is required.

## Features and Specifications

The Australian designed and assembled Selector® 3773E Sliding Door Mortice Locks are made from quality materials to meet high durability and strength requirements.

### Case and Faceplates

- High purity zinc alloy material cases.
- Stainless steel faceplates provided as standard.
- Brass faceplates available for alternative finishes

### Backset

- 60mm standard backset

### Latch Bolts

- Internal Self-latching bolt is made with stainless steel
- Deadlatching is achieved by an auxiliary, internal stainless steel bolt

### Cylinder Retaining Pin

Hard-drawn spring steel wire, corrosion protected.

### Door Thickness

Refer to selected electronic escutcheon for door thickness limitations.

### Door Clearance

3mm maximum from strike face.

### Aluminium Doors

Specify Selector® 3773EAF-KITSS for aluminium door fixing kit to convert a timber fix lock to suit aluminium door fixing. The aluminium door fixing kit comes with a 156 x 25mm radius corner faceplate common to other aluminium door locks.

### Retrofit Options

Specify Selector® 3773ERF-KITSS for components to allow retrofitting a 3573 Latching Strike. The retro-fit kit is provided with a strike mounting plate and trim plates to replace the 3573 latching strike.

### Security

The Selector® 3773E Sliding Door Mortice Lock conforms with Level S7 (Physical Security) Australian Lock Standard (AS-4145.2-2008). Conforms to Level S8 (Physical Security) when fitted with door furniture and anti-drill cylinder.

### Durability

The Selector® 3773E Sliding Door Mortice Locks conform with Level D8 (Durability) Australian Lock Standard (AS 4145.2-2008).

### Anti-Corrosion

The Selector® 3773E Sliding Door Mortice Locks conform with Level C6 (168 hours) Australian Lock Standard (AS4145.2-2008).

### Cylinder

Requires standard Lockwood oval shaped brass cylinders and brass barrels. Lockwood cylinders include bump resistant five pin tumbler mechanism.

Accepts both X7 and V cams. Provides unique mechanism to hold the key in retracted position to allow for single handed door opening.

### Keying

Restricted Special Keying

Lockwood locks can be keyed to a number of controlled and/or specially keyed systems. These range from legally protected keys to **protect against unauthorised duplication and can also include specially designed keying systems such as master key systems. This allows for different levels of mechanical access control.**

Please refer to [assaabloy.com.au](http://assaabloy.com.au) for keying systems or contact your local sales office or customer service for specific information.

### Standard Finishes

Stainless Steel SS

### Extended Cylinders

Modular Cylinder Extensions are available for thicker doors.

# Digital Access Solutions We Offer:



## Aperio H100



### Ordering Information

| Part Number      | Product Description   |
|------------------|---|
| H100B8L-SC-AU-SB | Aperio H100 Handle, Left, 8mm Spindle, Satin Pearl, Mobile Access With 3773E Sliding Door Mortice Lock Timber Fixing  |
| H100B8R-SC-AU-SB | Aperio H100 Handle, Right, 8mm Spindle, Satin Pearl, Mobile Access With 3773E Sliding Door Mortice Lock Timber Fixing |

## Aperio E100



### Ordering Information

| Part Number    | Product Description  |
|----------------|--|
| E103MUB1SS1-SB | Aperio E100 V3 Escutcheon 35-45mm Door Multi Class Mobile Access + 3773E Sliding Door Mortice Lock Timber Fixing |
| E103MUB1SS2-SB | Aperio E100 V3 Escutcheon 46-55mm Door Multi Class Mobile Access +3773E Sliding Door Mortice Lock Timber Fixing  |
| E103MUB1SS3-SB | Aperio E100 V3 Escutcheon 56-65mm Door Multi Class Mobile Access + 3773E Sliding Door Mortice Lock Timber Fixing |

## Integral



### Ordering Information

| Part Number        | Product Description   |
|--------------------|---|
| ITGL-AUT111KOSS-SB | Assa Abloy Integral Key Override Escutcheon (35mm - 55mm Door) With 3773E Sliding Door Mortice Lock Timber Fixing |
| ITGL-AUT111SS-SB   | Assa Abloy Integral Escutcheon (35mm - 55mm Door) With 3773E Sliding Door Mortice Lock Timber Fixing              |

## SMARTair



### Ordering Information

| Part Number        | Product Description   |
|--------------------|---|
| S4CB42SL2V6480I-SB | Smartair i-MAX R4N ESC, BLK, UOC, Mifare, STD Mortice, DDA, KO I With 3773E Sliding Door Mortice Lock Timber Fixing                     |
| S4CB46SL2V6480I-SB | Smartair i-MAX R4N ESC, BLK, UOC, Mifare, Keypad, STD Mortice, DDA, KO I With 3773E Sliding Door Mortice Lock Timber Fixing             |
| S4BB42SL2V6480I-SB | Smartair i-MAX R4N ESC, BLK, UOC/OPENOW, Mifare, STD Mortice, DDA, KO I With 3773E Sliding Door Mortice Lock Timber Fixing              |
| S4BB46SL2V6480I-SB | Smartair i-MAX R4N ESC, BLK, UOC/OPENOW, Mifare, Keypad, STD Mortice, DDA, KO I With 3773E Sliding Door Mortice Lock Timber Fixing      |
| S4ZB42SL2V6480I-SB | Smartair i-MAX R4N ESC, BLK, WIRELESS/OPENOW, Mifare, STD Mortice, DDA, KO I With 3773E Sliding Door Mortice Lock Timber Fixing         |
| S4ZB46SL2V6480I-SB | Smartair i-MAX R4N ESC, BLK, WIRELESS/OPENOW, Mifare, Keypad, STD Mortice, DDA, KO I With 3773E Sliding Door Mortice Lock Timber Fixing |

## Accessories

### Ordering Information

| Part Number  | Product Description                         |
|--------------|---|
| 3773EAFKITSS | 3773E Aluminium Door Fixing Conversion kit. |
| 3773ERFKITSS | 3773E Retro Fit Fixing Conversion kit.      |



The ASSA ABLOY Group is the global leader in access solutions. Every day, we help billions of people experience a more open world.

ASSA ABLOY Opening Solutions leads the development within door openings and products for access solutions in homes, businesses and institutions. Our offering includes doors, door and window hardware, mechanical and smart locks, access control and service.

**ASSA ABLOY**  
Opening Solutions

**Australia:**

ASSA ABLOY Australia Pty Limited  
235 Huntingdale Road  
Oakleigh Victoria 3166  
Australia  
+61 1300 562 587  
[assaabloyopeningsolutions.com.au](http://assaabloyopeningsolutions.com.au)

**New Zealand:**

ASSA ABLOY New Zealand Ltd  
6 Armstrong Road  
Albany, Auckland, 0632  
New Zealand  
[nzsales@assaabloy.com](mailto:nzsales@assaabloy.com)  
[assaabloy.com/nz](http://assaabloy.com/nz)

**Disclaimer**

Whilst every effort has been made to ensure that the information (including product images and drawings) contained in this brochure is accurate at the time of publication, ASSA ABLOY Australia Pty Limited ("ASSA ABLOY") recommends that you consult ASSA ABLOY or its agents prior to placing an order to ascertain current information on specific products, as ASSA ABLOY reserves the right to make changes without notice. ASSA ABLOY will not be liable for any injury, loss or damage whatsoever, arising from any errors or omissions in the information contained in the brochure or arising from the use or application of the information contained herein. © 2024 copyright by ASSA ABLOY All rights reserved